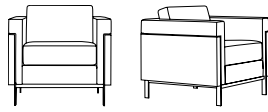


Genevieve Club Lounge



| Product No. | Dimensions | Fabric \$ | | | | | Leather \$ | | | | |
|---------------------------|---------------|-----------|------|-----|------|-----|------------|-----|------|-----|-------|
| GEN1 (Wd1 Surround) | 30w | COM | 4103 | F6 | 4575 | F12 | 5035 | COL | 4718 | L6 | 6878 |
| | 30d | F1 | 4371 | F7 | 4631 | F13 | 5147 | L1 | 5654 | L7 | 7238 |
| | 29h | F2 | 4403 | F8 | 4695 | F14 | 5271 | L2 | 5798 | L8 | 7670 |
| | 25ah | F3 | 4439 | F9 | 4767 | F15 | 5411 | L3 | 6014 | L9 | 8246 |
| | 17sh | F4 | 4479 | F10 | 4847 | F16 | 5571 | L4 | 6230 | L10 | 8894 |
| | 4 yds, 72 sf | F5 | 4523 | F11 | 4935 | F17 | 5747 | L5 | 6518 | L11 | 9614 |
| (Wd2 Surround) | 30w | COM | 4390 | F6 | 4862 | F12 | 5322 | COL | 5019 | L6 | 7179 |
| | 30d | F1 | 4658 | F7 | 4918 | F13 | 5434 | L1 | 5955 | L7 | 7539 |
| | 29h | F2 | 4690 | F8 | 4982 | F14 | 5558 | L2 | 6099 | L8 | 7971 |
| | 25ah | F3 | 4726 | F9 | 5054 | F15 | 5698 | L3 | 6315 | L9 | 8547 |
| | 17sh | F4 | 4766 | F10 | 5134 | F16 | 5858 | L4 | 6531 | L10 | 9195 |
| | 4 yds, 72 sf | F5 | 4810 | F11 | 5222 | F17 | 6034 | L5 | 6819 | L11 | 9915 |
| GENU1 (Uphol Surround) | 30w | COM | 3779 | F6 | 4605 | F12 | 5410 | COL | 4346 | L6 | 8126 |
| | 30d | F1 | 4248 | F7 | 4703 | F13 | 5606 | L1 | 5984 | L7 | 8756 |
| | 29h | F2 | 4304 | F8 | 4815 | F14 | 5823 | L2 | 6236 | L8 | 9512 |
| | 25ah | F3 | 4367 | F9 | 4941 | F15 | 6068 | L3 | 6614 | L9 | 10520 |
| | 17sh | F4 | 4437 | F10 | 5081 | F16 | 6348 | L4 | 6992 | L10 | 11654 |
| | 7 yds, 126 sf | F5 | 4514 | F11 | 5235 | F17 | 6656 | L5 | 7496 | L11 | 12914 |

Flat-cut (plain-sliced) veneers will run vertically, while quartered or rift-cut veneers will run horizontally.
Standard metal finish is MPC Polished Chrome. For Resin Brushed Steel, specify MRBS finish and deduct \$53.

Shipping address for COM/COL materials and memo samples:
TUOHY Furniture Corporation, Upholstery Receiving Dept, 13715 S Western Ave, Gardena, CA 90247

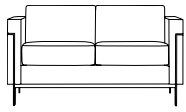


Please provide tagging information as needed for your project.

IMPORTANT! Additional yardage may be required for fabrics less than 54 inches wide and/or having more than a nominal vertical repeat or pattern.
Use the Additional Yardage (+YDG) requirements listed in the TUOHY Upholstery Partnership Guides for each upholstery offering to re-calculate the yardage or square footage needed for a given pattern. See also Table 2 on page D2.

| Category | Pattern | Grade |
|--------------|---------|-------|
| Faux-Leather | Proxy | F6 |
| Leather | Lena | L1 |
| Leather | Sierra | L1 |

Genevieve Settee



| Product No. | Dimensions | Fabric \$ | | | | | | | Leather \$ | | |
|---------------------------|-----------------|-----------|------|-----|------|-----|-------|-----|------------|-----|-------|
| GEN2 (Wd1 Surround) | 52w | COM | 5816 | F6 | 6583 | F12 | 7331 | COL | 6688 | L6 | 10198 |
| | 30d | F1 | 6252 | F7 | 6674 | F13 | 7513 | L1 | 8209 | L7 | 10783 |
| | 29h | F2 | 6304 | F8 | 6778 | F14 | 7714 | L2 | 8443 | L8 | 11485 |
| | 25ah | F3 | 6362 | F9 | 6895 | F15 | 7942 | L3 | 8794 | L9 | 12421 |
| | 17sh | F4 | 6427 | F10 | 7025 | F16 | 8202 | L4 | 9145 | L10 | 13474 |
| | 6.5 yds, 117 sf | F5 | 6499 | F11 | 7168 | F17 | 8488 | L5 | 9613 | L11 | 14644 |
| (Wd2 Surround) | 52w | COM | 6228 | F6 | 6995 | F12 | 7743 | COL | 7121 | L6 | 10631 |
| | 30d | F1 | 6664 | F7 | 7086 | F13 | 7925 | L1 | 8642 | L7 | 11216 |
| | 29h | F2 | 6716 | F8 | 7190 | F14 | 8126 | L2 | 8876 | L8 | 11918 |
| | 25ah | F3 | 6774 | F9 | 7307 | F15 | 8354 | L3 | 9227 | L9 | 12854 |
| | 17sh | F4 | 6839 | F10 | 7437 | F16 | 8614 | L4 | 9578 | L10 | 13907 |
| | 6.5 yds, 117 sf | F5 | 6911 | F11 | 7580 | F17 | 8900 | L5 | 10046 | L11 | 15077 |
| GENU2 (Uphol Surround) | 52w | COM | 5169 | F6 | 6703 | F12 | 8198 | COL | 5944 | L6 | 12964 |
| | 30d | F1 | 6040 | F7 | 6885 | F13 | 8562 | L1 | 8986 | L7 | 14134 |
| | 29h | F2 | 6144 | F8 | 7093 | F14 | 8965 | L2 | 9454 | L8 | 15538 |
| | 25ah | F3 | 6261 | F9 | 7327 | F15 | 9420 | L3 | 10156 | L9 | 17410 |
| | 17sh | F4 | 6391 | F10 | 7587 | F16 | 9940 | L4 | 10858 | L10 | 19516 |
| | 13 yds, 234 sf | F5 | 6534 | F11 | 7873 | F17 | 10512 | L5 | 11794 | L11 | 21856 |

Flat-cut (plain-sliced) veneers will run vertically, while quartered or rift-cut veneers will run horizontally.
Standard metal finish is MPC Polished Chrome. For Resin Brushed Steel, specify MRBS finish and deduct \$53.

Shipping address for COM/COL materials and memo samples:
TUOHY Furniture Corporation, Upholstery Receiving Dept, 13715 S Western Ave, Gardena, CA 90247

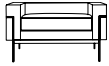


Please provide tagging information as needed for your project.

IMPORTANT! Additional yardage may be required for fabrics less than 54 inches wide and/or having more than a nominal vertical repeat or pattern.
Use the Additional Yardage (+YDG) requirements listed in the TUOHY Upholstery Partnership Guides for each upholstery offering to re-calculate the yardage or square footage needed for a given pattern. See also Table 2 on page D2.

| Category | Pattern | Grade |
|--------------|---------|-------|
| Faux-Leather | Proxy | F6 |
| Leather | Lena | L1 |
| Leather | Sierra | L1 |

Genevieve Single Bench



| Product No. | Dimensions | Fabric \$ | | | | | Leather \$ | | | | | |
|----------------------------|----------------|-----------|------|------|------|------|------------|------|------|------|-------|------|
| GENB1 (Wd1 Surround) | 30w | COM | 2518 | F6 | 2990 | F12 | 3450 | COL | 2896 | L6 | 5056 | |
| | 22d | F1 | 2786 | F7 | 3046 | F13 | 3562 | L1 | 3832 | L7 | 5416 | |
| | 20h | F2 | 2818 | F8 | 3110 | F14 | 3686 | L2 | 3976 | L8 | 5848 | |
| | | F3 | 2854 | F9 | 3182 | F15 | 3826 | L3 | 4192 | L9 | 6424 | |
| | 16sh | F4 | 2894 | F10 | 3262 | F16 | 3986 | L4 | 4408 | L10 | 7072 | |
| | 4 yds, 72 sf | F5 | 2938 | F11 | 3350 | F17 | 4162 | L5 | 4696 | L11 | 7792 | |
| | (Wd2 Surround) | 30w | COM | 2703 | F6 | 3175 | F12 | 3635 | COL | 3090 | L6 | 5250 |
| | | 22d | F1 | 2971 | F7 | 3231 | F13 | 3747 | L1 | 4026 | L7 | 5610 |
| | | 20h | F2 | 3003 | F8 | 3295 | F14 | 3871 | L2 | 4170 | L8 | 6042 |
| | | | F3 | 3039 | F9 | 3367 | F15 | 4011 | L3 | 4386 | L9 | 6618 |
| 16sh | | F4 | 3079 | F10 | 3447 | F16 | 4171 | L4 | 4602 | L10 | 7266 | |
| 4 yds, 72 sf | | F5 | 3123 | F11 | 3535 | F17 | 4347 | L5 | 4890 | L11 | 7986 | |
| GENBU1 (Uphol Surround) | | 30w | COM | 2516 | F6 | 3224 | F12 | 3914 | COL | 2893 | L6 | 6133 |
| | | 22d | F1 | 2918 | F7 | 3308 | F13 | 4082 | L1 | 4297 | L7 | 6673 |
| | | 20h | F2 | 2966 | F8 | 3404 | F14 | 4268 | L2 | 4513 | L8 | 7321 |
| | | | F3 | 3020 | F9 | 3512 | F15 | 4478 | L3 | 4837 | L9 | 8185 |
| | 16sh | F4 | 3080 | F10 | 3632 | F16 | 4718 | L4 | 5161 | L10 | 9157 | |
| | 6 yds, 108 sf | F5 | 3146 | F11 | 3764 | F17 | 4982 | L5 | 5593 | L11 | 10237 | |

Flat-cut (plain-sliced) veneers will run vertically, while quartered or rift-cut veneers will run horizontally. Standard metal finish is MPC Polished Chrome. For Resin Brushed Steel, specify MRBS finish and deduct \$53.

Genevieve Double Bench



| | | | | | | | | | | | | |
|----------------------------|----------------|-----|------|------|------|------|------|------|------|------|-------|------|
| GENB2 (Wd1 Surround) | 52w | COM | 2954 | F6 | 3426 | F12 | 3886 | COL | 3397 | L6 | 5557 | |
| | 22d | F1 | 3222 | F7 | 3482 | F13 | 3998 | L1 | 4333 | L7 | 5917 | |
| | 20h | F2 | 3254 | F8 | 3546 | F14 | 4122 | L2 | 4477 | L8 | 6349 | |
| | | F3 | 3290 | F9 | 3618 | F15 | 4262 | L3 | 4693 | L9 | 6925 | |
| | 16sh | F4 | 3330 | F10 | 3698 | F16 | 4422 | L4 | 4909 | L10 | 7573 | |
| | 4 yds, 72 sf | F5 | 3374 | F11 | 3786 | F17 | 4598 | L5 | 5197 | L11 | 8293 | |
| | (Wd2 Surround) | 52w | COM | 3199 | F6 | 3671 | F12 | 4131 | COL | 3655 | L6 | 5815 |
| | | 22d | F1 | 3467 | F7 | 3727 | F13 | 4243 | L1 | 4591 | L7 | 6175 |
| | | 20h | F2 | 3499 | F8 | 3791 | F14 | 4367 | L2 | 4735 | L8 | 6607 |
| | | | F3 | 3535 | F9 | 3863 | F15 | 4507 | L3 | 4951 | L9 | 7183 |
| 16sh | | F4 | 3575 | F10 | 3943 | F16 | 4667 | L4 | 5167 | L10 | 7831 | |
| 4 yds, 72 sf | | F5 | 3619 | F11 | 4031 | F17 | 4843 | L5 | 5455 | L11 | 8551 | |
| GENBU2 (Uphol Surround) | | 52w | COM | 3256 | F6 | 3964 | F12 | 4654 | COL | 3744 | L6 | 6984 |
| | | 22d | F1 | 3658 | F7 | 4048 | F13 | 4822 | L1 | 5148 | L7 | 7524 |
| | | 20h | F2 | 3706 | F8 | 4144 | F14 | 5008 | L2 | 5364 | L8 | 8172 |
| | | | F3 | 3760 | F9 | 4252 | F15 | 5218 | L3 | 5688 | L9 | 9036 |
| | 16sh | F4 | 3820 | F10 | 4372 | F16 | 5458 | L4 | 6012 | L10 | 10008 | |
| | 6 yds, 108 sf | F5 | 3886 | F11 | 4504 | F17 | 5722 | L5 | 6444 | L11 | 11088 | |

Flat-cut (plain-sliced) veneers will run vertically, while quartered or rift-cut veneers will run horizontally. Standard metal finish is MPC Polished Chrome. For Resin Brushed Steel, specify MRBS finish and deduct \$53.

Shipping address for COM/COL materials and memo samples:
TUOHY Furniture Corporation, Upholstery Receiving Dept, 13715 S Western Ave, Gardena, CA 90247



Please provide tagging information as needed for your project.

IMPORTANT! Additional yardage may be required for fabrics less than 54 inches wide and/or having more than a nominal vertical repeat or pattern. Use the Additional Yardage (+YDG) requirements listed in the TUOHY Upholstery Partnership Guides for each upholstery offering to re-calculate the yardage or square footage needed for a given pattern. See also Table 2 on page D2.

| Category | Pattern | Grade |
|--------------|---------|-------|
| Faux-Leather | Proxy | F6 |
| Leather | Lena | L1 |
| Leather | Sierra | L1 |

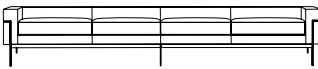
Genevieve Triple Bench



| Product No. | Dimensions | Fabric \$ | | | | | Leather \$ | | | | | |
|----------------------------|----------------|-----------|------|------|------|------|------------|------|------|------|-------|-------|
| GENB3 (Wd1 Surround) | 74w | COM | 3740 | F6 | 4684 | F12 | 5604 | COL | 4301 | L6 | 8621 | |
| | 22d | F1 | 4276 | F7 | 4796 | F13 | 5828 | L1 | 6173 | L7 | 9341 | |
| | 20h | F2 | 4340 | F8 | 4924 | F14 | 6076 | L2 | 6461 | L8 | 10205 | |
| | | F3 | 4412 | F9 | 5068 | F15 | 6356 | L3 | 6893 | L9 | 11357 | |
| | 16sh | F4 | 4492 | F10 | 5228 | F16 | 6676 | L4 | 7325 | L10 | 12653 | |
| | 8 yds, 144 sf | F5 | 4580 | F11 | 5404 | F17 | 7028 | L5 | 7901 | L11 | 14093 | |
| | (Wd2 Surround) | 74w | COM | 4079 | F6 | 5023 | F12 | 5943 | COL | 4657 | L6 | 8977 |
| | | 22d | F1 | 4615 | F7 | 5135 | F13 | 6167 | L1 | 6529 | L7 | 9697 |
| | | 20h | F2 | 4679 | F8 | 5263 | F14 | 6415 | L2 | 6817 | L8 | 10561 |
| | | | F3 | 4751 | F9 | 5407 | F15 | 6695 | L3 | 7249 | L9 | 11713 |
| 16sh | | F4 | 4831 | F10 | 5567 | F16 | 7015 | L4 | 7681 | L10 | 13009 | |
| 8 yds, 144 sf | | F5 | 4919 | F11 | 5743 | F17 | 7367 | L5 | 8257 | L11 | 14449 | |
| GENBU3 (Uphol Surround) | | 74w | COM | 3702 | F6 | 5118 | F12 | 6498 | COL | 4257 | L6 | 10737 |
| | | 22d | F1 | 4506 | F7 | 5286 | F13 | 6834 | L1 | 7065 | L7 | 11817 |
| | | 20h | F2 | 4602 | F8 | 5478 | F14 | 7206 | L2 | 7497 | L8 | 13113 |
| | | | F3 | 4710 | F9 | 5694 | F15 | 7626 | L3 | 8145 | L9 | 14841 |
| | 16sh | F4 | 4830 | F10 | 5934 | F16 | 8106 | L4 | 8793 | L10 | 16785 | |
| | 12 yds, 216 sf | F5 | 4962 | F11 | 6198 | F17 | 8634 | L5 | 9657 | L11 | 18945 | |

Flat-cut (plain-sliced) veneers will run vertically, while quartered or rift-cut veneers will run horizontally. Standard metal finish is MPC Polished Chrome. For Resin Brushed Steel, specify MRBS finish and deduct \$79.

Genevieve Quad Bench



| | | | | | | | | | | | | |
|----------------------------|----------------|-----|------|------|------|------|------|------|-------|------|-------|-------|
| GENB4 (Wd1 Surround) | 96w | COM | 4005 | F6 | 5185 | F12 | 6335 | COL | 4606 | L6 | 10006 | |
| | 22d | F1 | 4675 | F7 | 5325 | F13 | 6615 | L1 | 6946 | L7 | 10906 | |
| | 20h | F2 | 4755 | F8 | 5485 | F14 | 6925 | L2 | 7306 | L8 | 11986 | |
| | | F3 | 4845 | F9 | 5665 | F15 | 7275 | L3 | 7846 | L9 | 13426 | |
| | 16sh | F4 | 4945 | F10 | 5865 | F16 | 7675 | L4 | 8386 | L10 | 15046 | |
| | 10 yds, 180 sf | F5 | 5055 | F11 | 6085 | F17 | 8115 | L5 | 9106 | L11 | 16846 | |
| | (Wd2 Surround) | 96w | COM | 4390 | F6 | 5570 | F12 | 6720 | COL | 5010 | L6 | 10410 |
| | | 22d | F1 | 5060 | F7 | 5710 | F13 | 7000 | L1 | 7350 | L7 | 11310 |
| | | 20h | F2 | 5140 | F8 | 5870 | F14 | 7310 | L2 | 7710 | L8 | 12390 |
| | | | F3 | 5230 | F9 | 6050 | F15 | 7660 | L3 | 8250 | L9 | 13830 |
| 16sh | | F4 | 5330 | F10 | 6250 | F16 | 8060 | L4 | 8790 | L10 | 15450 | |
| 10 yds, 180 sf | | F5 | 5440 | F11 | 6470 | F17 | 8500 | L5 | 9510 | L11 | 17250 | |
| GENBU4 (Uphol Surround) | | 96w | COM | 3594 | F6 | 5246 | F12 | 6856 | COL | 4133 | L6 | 11693 |
| | | 22d | F1 | 4532 | F7 | 5442 | F13 | 7248 | L1 | 7409 | L7 | 12953 |
| | | 20h | F2 | 4644 | F8 | 5666 | F14 | 7682 | L2 | 7913 | L8 | 14465 |
| | | | F3 | 4770 | F9 | 5918 | F15 | 8172 | L3 | 8669 | L9 | 16481 |
| | 16sh | F4 | 4910 | F10 | 6198 | F16 | 8732 | L4 | 9425 | L10 | 18749 | |
| | 14 yds, 252 sf | F5 | 5064 | F11 | 6506 | F17 | 9348 | L5 | 10433 | L11 | 21269 | |

Flat-cut (plain-sliced) veneers will run vertically, while quartered or rift-cut veneers will run horizontally. Standard metal finish is MPC Polished Chrome. For Resin Brushed Steel, specify MRBS finish and deduct \$79.

> See also: Genevieve Tables

Shipping address for COM/COL materials and memo samples:
TUOHY Furniture Corporation, Upholstery Receiving Dept, 13715 S Western Ave, Gardena, CA 90247



Please provide tagging information as needed for your project.

IMPORTANT! Additional yardage may be required for fabrics less than 54 inches wide and/or having more than a nominal vertical repeat or pattern. Use the Additional Yardage (+YDG) requirements listed in the TUOHY Upholstery Partnership Guides for each upholstery offering to re-calculate the yardage or square footage needed for a given pattern. See also Table 2 on page D2.

| Category | Pattern | Grade |
|--------------|---------|-------|
| Faux-Leather | Proxy | F6 |
| Leather | Lena | L1 |
| Leather | Sierra | L1 |